

TOYO Corporation



1-6, Yaesu 1-chome, Chuo-ku, Tokyo 103-8284, Japan

Head Office TEL +81-(0)3-3279-0771 / FAX +81-(0)3-3246-0645

Osaka Branch TEL +81-(0)6-6399-9771 / FAX +81-(0)6-6399-9781

Nagoya Branch TEL +81-(0)52-253-6271 / FAX +81-(0)52-253-6448

Utsunomiya Sales Office TEL +81-(0)28-678-9117 / FAX +81-(0)28-638-5380

www.toyo.co.jp/english/

The company names, company logos, and product names herein are trademarks or registered trademarks and the property of the respective companies.

CORPORATE PROFILE 2025



MESSAGE

Creating the Future with Measurement Technologies Cutting-edge Measurement Solutions Support Technology Innovations



As a leading provider of measurement solutions, TOYO Corporation has been contributing to technology innovations in diverse industries. Through our variety of business segments – Advanced Mobility, Sustainable Energy, ICT (Information and Communication Technologies) and Information Security, EMC (Electromagnetic Compatibility) and Antenna Systems, Ocean Defense and Security, Software Quality and Productivity, and Life Science, we provide solutions in Japan and international markets.

We are on a mission to promote growth strategies by developing high-value-added original products and solutions, making strategic investments in high potential international markets, and M&A executions.

Furthermore, TOYO's diverse business directly contributes to the creation of a sustainable society, and we are committed to solving social challenges and enhancing corporate value through ESG-based business activities.

Toshiya Kohno
President & CEO



Corporate Philosophy

Creating the Future with Measurement Technologies

As a leading company in measurement technologies, contribute to enriching society, and realizing human and earth friendly environments.

Technology Interface

Accelerate and support technology innovation by providing the most advanced measurement solutions to the global industrial arena.

Enhance Corporate Value

Ensure the success and well-being of employees and stakeholders by continuously creating measurement systems, products, and services.

Action Guidelines

Be Professional

Take on tasks with integrity and maintain a high degree of dignity and capabilities.

Be Innovative

Venture into new businesses and technologies with a flexible mindset.

Medium-Term Management Plan "TY2027"

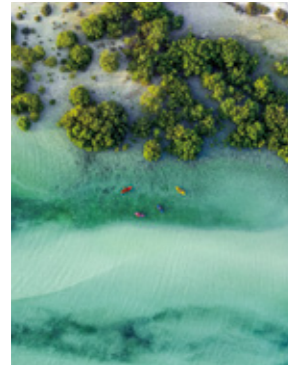
Our group has set a Long-Term Vision "BT600-2030" for the year 2030. Currently, we are implementing the new Medium-Term Management Plan "TY2027", which is the midpoint of 2030, with our growth strategies based on three pillars: "Business Strategy", "Financial and Capital Strategies" and "Sustainability Management". As a leading provider of measurement solutions, we contribute to creating a sustainable society and enhance corporate value.



OUR APPROACH TO SOCIETY

As a leading provider of measurement solutions, we promote business activities based on the corporate philosophy aiming for sustainable growth and contribute to the creation of sustainable future through solving social issues.

TOYO's solutions contribute to creating a better society. Although you may not see them or sense us, they are there; we are there. Here are just a few examples.



Environment

Environmental conservation activities accordance with ISO 14001

Pursue a Carbon-Free Society

We engage in the reduction of CO₂ emission by supporting the development of secondary batteries, Electric Vehicles(EVs), and renewable energy.

Achieve a Recycle-Oriented Society

We contribute to recycle-oriented society by promoting proper waste management and resource conservation to reduce environmental impact.

Restore Ocean Health

We provide undersea observation solutions effective for ocean surveys and contribute to help stop ocean pollution and to get back our rich marine ecosystem.



Social

TOYO's responsibility for creating a better society

Establish a Safe, Secure, and Prosperous Society

We contribute to establishing a safe, secure, and prosperous society by providing a variety of solutions in the fields of advanced mobility development, disaster preparedness, network infrastructure, security, and medical care.

Respect Diversity and Human Rights

We build a corporate culture in which every employee, regardless of nationality, gender, sexual orientation, or disability, may work comfortably.

Enhance Comfortable Working Environment

We place a high priority on work-life balance and mental health management to create a comfortable working environment.



Governance

Policy and basic concept on corporate governance

Enhance a Strong and Sound Corporate Governance Structure

We aim to sustainably enhance corporate value by strengthening the transparency, soundness and credibility of management.

Develop and Reinforce Risk Management System

We work toward sustainable growth by strengthening internal controls, managing potential risks and improving internal penetration.

Ensure Compliance

We remain a sound and fair company that complies completely with all laws and regulations by providing clear risk countermeasures to all employees.

Involvement in Initiative/ External Evaluation



TOYO is a member of TCFD Consortium and concurs with the TCFD recommendations.



TOYO was selected as an index constituent of the FTSE Blossom Japan Sector Relative Index for the second consecutive year in July 2024.



TOYO received a B score in the CDP Climate Change Report 2023 in February 2024.



Offering realistic scenery-based driving simulations for a mobility research project

— Investigating the interaction between people and mobility



Supporting highway maintenance management by efficiently collecting and analyzing accurate road data

— Assisting the development of a safe and reliable social infrastructure



TOYO's ocean measurement technology contributed to relics excavations

— Ertuğrul, the cornerstone of the bonds between Japan and Turkey



Disaster prediction by observing radio waves from space

— Observing the Earth with radio telescopes



Supporting preliminary stone material analysis of the "Hayabusa2"

— Analyzing the sample of Asteroid Ryugu



For more information, visit Sustainability page on our website



For more information, visit "TOYO in SOCIETY" page on our website *some articles are available in Japanese only

MEASUREMENT SOLUTIONS PROVIDER

As a leading provider of measurement solutions, each engineer specialized in sales, development and technical support works together and solves customers' challenges. Leveraging advanced knowledge and know-how of the technologies, we cooperate with partners all over the world and develop original in-house products actively.

Provide best solutions

to our customers as a partner in value creation

Be Aware of the Market **Needs** and Create Our **Original Products**

Solve the Challenges with Our **Total Solutions**



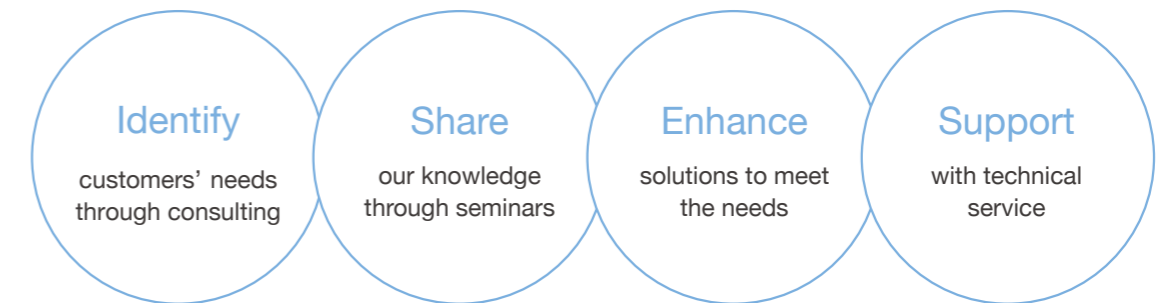
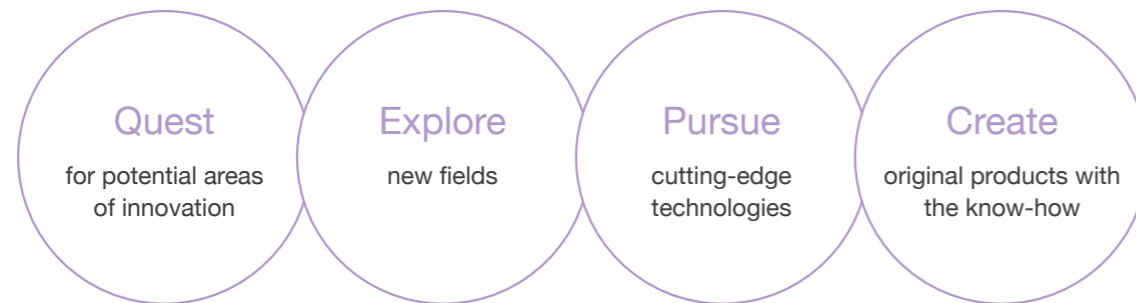
With partners all over the world —

Making partnerships with more than 150 companies in the world, TOYO provides cutting-edge measurement technologies. In the changing markets, we keep questing for new technologies in emerging fields and developing our original in-house products. Utilizing our 70 years' experience and skills, we provide new solutions created with our partners.



With customers whenever necessary —

We have committed to providing training and consulting supports and highly qualified repair and calibration services, along with delivering products that meet customers' needs. TOYO continues to support our customers as a value-adding partner and solve challenges together.



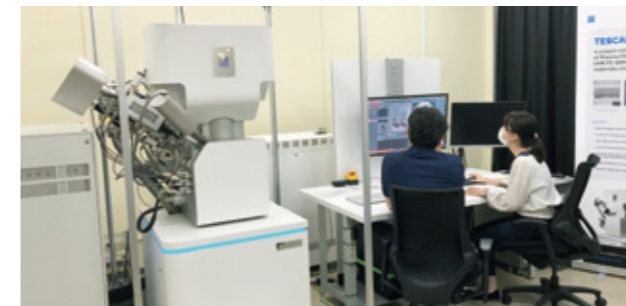
Facilities that Support TOYO's Solutions



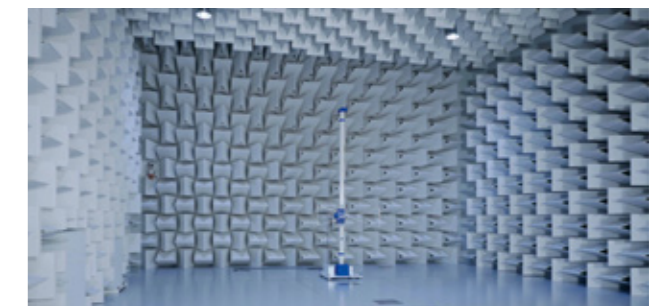
R&D Center
Supporting our customers' research and development



Technical Research Laboratory (located in Technical & Logistics Center)
Adopting new technologies to develop original products



Keio-TOYO Nano Imaging Center
Office for Industry-Academia Collaboration between TOYO and Keio University Central Service Facilities for Research



Testing Laboratories (Anechoic Chambers) at TOYO EMC Engineering
Applicable to various EMC testing
Obtaining EMC Testing Accreditations such as A2LA and BSMI, and TÜV Rheinland

RESEARCH & DEVELOPMENT

TOYO develops original or customized products to create optimal solutions that would fit customers' needs. We actively work on development of highly valued and qualified original products, cooperating with partners and utilizing our technology seeds.

Highly Valued and Qualified In-house Products



"PI-1000"
Oil Particle Counter



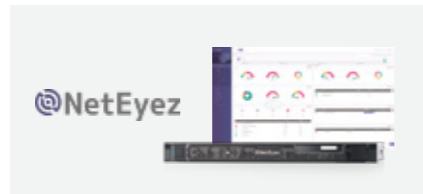
High Frequency Impedance Measurement System



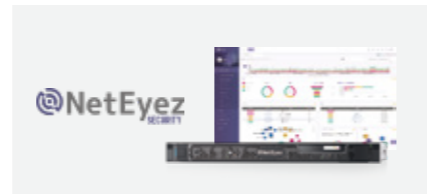
"EPX/RE & EPX/CE"
Emissions Measurement & Analysis Software



"SYNESIS"
High Speed Packet Capture & Analysis System



"NetEyez"
Network Traffic Analysis Solution



"NetEyez Security"
Network Security Threat Analysis Solution



"LCE-X"
Liquid Crystal Characteristic Measurement System



"AGM (Agarose Gel Microcapsules) Reagent kit"
Single-cell Genomics Tool that Unlocks New Insights

Other Products Developed/Customized by TOYO

- "IM10/RS" Radiated Immunity Measurement Software
- "Z-RW-Analysis" Impedance Analysis Software
- Hall Effect Measurement Systems
- Ferroelectric Substance Evaluation Systems
- Fuel Cell Evaluation Systems
- 3D Impedance Analysis Software
- Automatic Motor Torque Measurement Systems
- "TSB (Toyo Smart Bench)" All-in-One Motor Torque Test Bench
- Automatic EMI Measurement Systems
- "EMINT" EMI Mitigation Assistance Software

Development of Original Solutions

TOYO develops original and advanced measurement solutions for various sectors – next-generation batteries such as solid-state battery and autonomous driving/Advanced Driver Assistance System (ADAS) technologies. Our Technical Research Center creates "Only One" and "Number One" solutions by collaborating with both internal and external partners.



"DMTS" Driving & Motion Test System

R&D Center



EV Charging System Testing Lab

Carrying Out Charging Evaluation Tests All in One Place

EV Charging System Testing Lab, with equipment for multiple main charging protocols, is feasible to conduct measurements in a way that complies with the latest standards. Additionally, charging, control, and communication system measurements can be synchronized. Even EVs and chargers in development can be assessed in a highly secured setting by testing actual vehicles indoor.

TOYO and TÜV Rheinland Japan Provide Testing Services

TOYO conducts the evaluation in the Lab under the direction of our experienced engineers, and TÜV Rheinland Japan assesses and analyzes the test outcomes and delivers conformity assessment. We issue highly reliable reports.



Calibration Lab

Providing Precise and Prompt Calibration Services

Our "Calibration Laboratory", granted ISO/IEC 17025 accreditation from A2LA, offers extremely precise calibration of EMC and highfrequency devices and equipment for noise and vibration. We offer even faster customer support due to the seamless integration of the inspection, repair services, and any other technical support services.



ICT Lab

Conducting Testing for Next-Generation High-Speed Network

The Lab replicates a data center and allows for various network equipment testing. Additionally, it enables performance testing of devices suitable for next-generation high-speed networks such as 5G and 800Gbps.



Pool for Testing Ocean Measurement Equipment Performance

We utilize the pool to develop new solutions and to test the functionality of ocean measurement tools including acoustic sonar and underwater laser systems.

OUR GROUP COMPANIES

TOYO and our group companies work together to develop cutting-edge measurement technologies

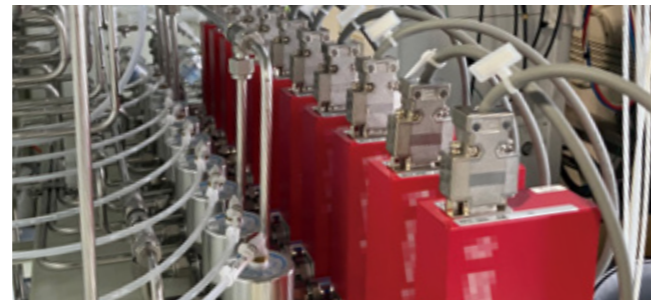
Focusing on top priorities including Sustainable Energy and Advanced Mobility, we develop cutting-edge measurement solutions using our group companies' unique technology and knowledge. We are also expanding our sales areas in global markets through our overseas group companies.

Domestic Subsidiaries

L.Tail Co., Ltd.

Hyogo, JAPAN

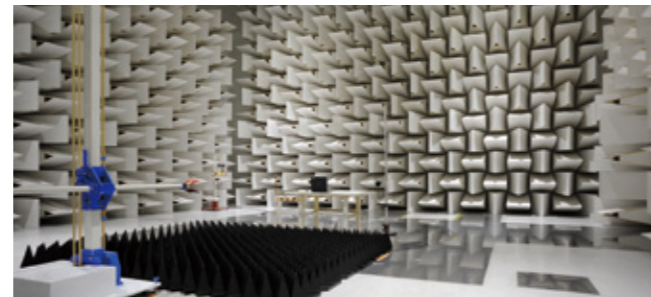
The company manufactures and installs fluid control equipment utilizing its own technology, which is used by R&D divisions in public research institutes and major manufacturers and gas companies. Since 1999, TOYO has been developing and selling fuel cell evaluation systems that integrate this fluid control equipment with TOYO's electrochemical measurement system. In collaborating with our international partners, we will keep expanding our hydrogen business globally, primarily by offering our distinctive fuel cell and water electrolysis evaluation solutions.



TOYO EMC Engineering

Tokyo, JAPAN

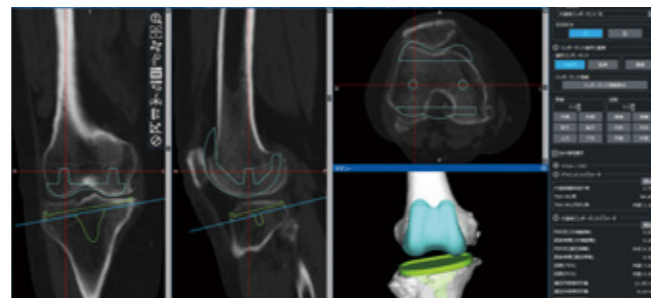
The company has three testing laboratories in Japan (Tsukuba, Kawasaki, and Hyogo) that are equipped with anechoic chambers and provide contract EMC testing services and EMC countermeasure support in a variety of fields such as telecommunications, automotive, and medical, as well as A2LA accredited instrument calibration services and support for obtaining international certifications. Together with TOYO, it expands its business by increasing the area of accredited calibration services and efficiently managing anechoic chambers.



LEXI Co., Ltd.

Tokyo, JAPAN

The company develops and sells "ZedView", a 3D software for preoperative planning of artificial joint replacement surgery, that is well-known for its precision. Along with 2D software for preoperative planning of the surgery that TOYO provides, LEXI and TOYO offer the best solutions to doctors and enhance people's health.



Overseas Subsidiaries

Rototest International AB

Rönninge, SWEDEN

The company manufactures the hub dynamometer "ROTOTEST Energy", which is globally sold in the US, Asia, and Europe. This hub dynamometer is simple to set up and relocate, and TOYO has developed its own Driving and Motion Test System "DMTS", which integrates this system with radar and camera simulators.



SEGMENTS

Our various fields of measurement solutions contribute to technological innovation, research and development, and creation of a sustainable society.



Sustainable Energy



Automotive Solutions



e-Mobility



ICT



EMC & Antenna Systems



Software Quality & Productivity



Ocean / Defense & Security



Information Security



Life Science



Provide advanced measurement technologies for next-generation energy

Aiming to be carbon neutral by 2050, the energy vertical is experiencing dramatic changes with considerable efforts made in the fields of renewable energy and EVs, where TOYO measurement technologies are applied. TOYO provides high-precision measurement and evaluation systems for a wide range of applications, including basic research and product development in energy devices like secondary batteries and fuel cells, as well as electronic materials and devices like power semiconductors and organic electronics.



"SP-300"
Electrochemical Measurement System



"ResiTest8404-EMPAC"
Hall Effect Measurement System



"Amber X 2"
FIB-SEM

Products

- Electrochemical Measurement Systems | ■ Secondary Battery Evaluation Systems | ■ Secondary Battery Material Evaluation Systems | ■ Fuel Cell Evaluation Systems
- Electrolyzer Evaluation Systems | ■ Semiconductor Material Evaluation Systems | ■ Ultra Low Temperature Sensors and Measurement Systems
- Magnetic Material/Magnetic Field Measurement Systems | ■ Liquid Crystal Characteristic Measurement Systems
- FIB-SEM (Focused Ion Beam Scanning Electron Microscopes) | ■ Micro-CT Systems | ■ Hardness and Young's Modulus Measurement Systems



Support autonomous and advanced automotive technology development along with industrial infrastructure efficiency

We provide equipment and solutions for measurement, analysis, and experimental data management to support R&D in the areas of "performance (operability, ride comfort, etc.)", of transportation equipment such as automobiles and trains, as well as "noise and vibration", and "safety and durability" of industrial machinery. We offer a variety of R&D solutions for emerging areas such as autonomous driving and Advanced Driver Assistance Systems (ADAS).



"DMTS"
Driving & Motion Test System



Noise and Vibration Analysis System



Sensors for Acceleration, Acoustics, Force,
Load and Pressure

Products

- Accelerometers/Impact Hammers | ■ Microphones/Particle Velocity Sensors | ■ Evaluation Tools for AD/ADAS Development | ■ "DMTS" Driving & Motion Test System
- Intelligent DAQ for CAN bus and Analog Signal | ■ Noise and Vibration/Displacement/Temperature/Speaker Measurement & Analysis Tools | ■ Road Surface Measurement Systems
- Resource/Data Management Software



e-Mobility

Support the electrification of mobility with measurement technologies

We provide solutions and standard-compliance testing services to help improve technical performance, such as cruising range of various e-mobilities including EVs and plug-in hybrid vehicles (PHVs), to establish a new mobility society. We develop and offer innovative measurement solutions, along with aircraft technology and evaluation, for eVTOL (Electric Vertical Takeoff and Landing), a new type of aerial mobility.



"EVCA series"
EV Charging Analyzer/Simulator



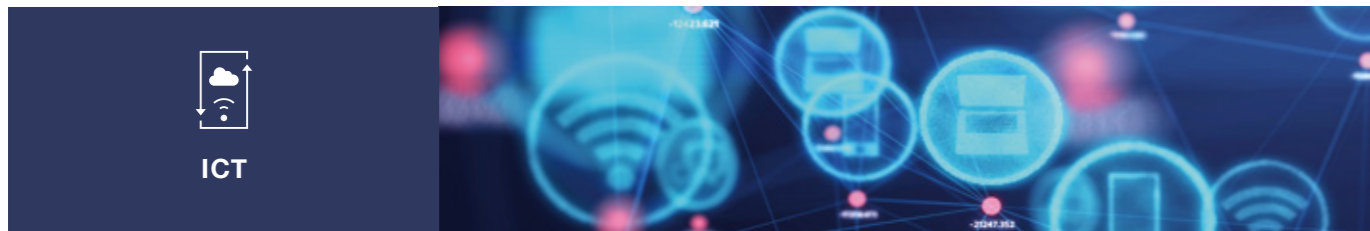
Torque Measurement System



High Power Bi-Directional Power Supply System

Products

- Charging Analyzers/Simulators for EVs | ■ Battery Cell Simulators | ■ High Power Bi-Directional Power Supply Systems | ■ Grid Simulators/AC Power Sources | ■ Ripple Generators
- Motor Emulators | ■ Torque Meters/Brake Systems | ■ All-in-one Motor Torque Testing Bench | ■ Load Motor Systems for Evaluating Electric Power Train
- Conformance Testing Service for EV Charging Regulations



ICT

Provide reliable, accurate, and secure operations for communications

Information and communication technology (ICT) is used not only for communication between people and organizations, but also for social infrastructure support and connected vehicles, among many other things. To ensure high quality, reliable, and secure communications, we provide a wide range of advanced solutions that meet the latest technological standards, including test systems and analysis/monitoring systems.



"Spirent TestCenter"
Next-Generation
Network Performance Tester



"KnowBe4"
Security Awareness Training and
Phishing Simulation



"SYNESIS"
High Speed
Packet Capture & Analysis System

Products

- Ultra High Speed IP Network Performance Test Solutions (400G/200G/100G) | ■ High Speed Packet Capture & Analysis Systems (200G/100G/40G/25G/10G/1G)
- Mobile Network/Wireless Performance Test & Analysis Solutions | ■ 5G/Local 5G Solutions (Survey, Design Simulation, Network Test Emulation, Time Synchronization)
- Precision Time Synchronization Solutions (High-Precision PTP, NTP Time Server, Optical Pumping Cesium Atomic Clock, GNSS Simulator)
- Virtual Environment Monitoring & Visualization & Performance Test Solutions | ■ Security Diagnosis & Testing & Education Solutions (Security Performance & Diagnostic Service, Security Awareness Training, Penetration Testing, Vulnerability Management, Fuzzing)
- Automobile and Connected Vehicle Measurement Solutions (In-Vehicle Ethernet, V2X, OTA, Security, High-Precision Orthoimage Systems)



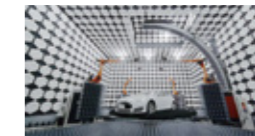
EMC & Antenna Systems

Provide solutions for electromagnetic environments

TOYO has been supporting EMC (Electromagnetic Compatibility) compliance testing for more than 40 years and offers a variety of solutions that involve electromagnetic waves. Our measurement systems and test equipment have supported the development of electronic equipment such as automobiles, information and communication equipment, and medical equipment. We provide OTA (Over the Air) measurement systems for 5G and connected vehicles. We install, support, and maintain large parabolic antenna ground systems and have been doing so for more than 30 years.



EMI Measurement System



Wireless Communication Performance
Measurement System for
Connected Vehicles



Large Parabolic Antenna
Systems for Ground Stations

Products

- EMC Measurement Systems | ■ RF Power Amplifiers | ■ EMI Test Receivers | ■ EMC Measurement Software | ■ Antenna/OTA Measurement Systems
- OTA Reverberation Test Systems | ■ Automotive Radar Target Simulator | ■ Antenna Systems for RF and Optical Ground Station | ■ Radomes | ■ Hydrogen Masers



Software Quality & Productivity

Support improvements in the quality and productivity of software development

We apply measurement technologies to the software development field. From quality improvements to productivity enhancements, we provide products and services that support the software development lifecycle. We supply the latest security solutions for digital transformation (DX) to support the ongoing DX paradigm shift.



"Helix QAC"
Static Test Tool for
C Language Source Code



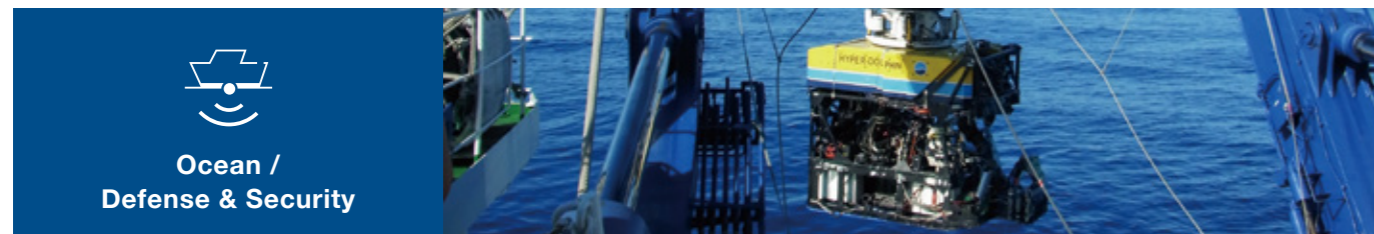
"BlazeMeter"
Continuous Testing Platform



"Helix Core"
Software Configuration
Management Tool

Products

- Software Configuration Management Tools | ■ Digital Asset Management Tools | ■ Project Management Tools | ■ Software Static Test Tools
- Vulnerability Static Analysis Tools for Applications | ■ Web Application Performance Test Tools | ■ Binary Analysis Tools | ■ Host IDPS Tools | ■ Reverse Engineering Tools
- Software Design Support Tools



Ocean / Defense & Security

Propose various measurement solutions for oceans including ocean survey, fisheries, and defense

We offer ocean survey and measurement equipment based on the world's cutting-edge ocean-related technology for offshore, underwater, and submarine applications, as well as port areas. These technologies support Japan, which is surrounded by seas, in fields such as defense, offshore wind power generation, and fisheries.



Products

- Multibeam Echosounders | ■ Electro-Optical Systems | ■ Underwater Communication Systems | ■ Weather Observation Systems | ■ Underwater Vehicles (ROV/AUV)
- Acoustic Video Cameras | ■ Sub-Bottom Profilers | ■ Hydrographic Survey and Processing Software | ■ Inertially-Aided GPS Positioning and Orientation Systems | ■ Hydrophones



Information Security

Apply measurement technologies to cyber security products and services

"Security & Lab Company", an in-house company that commercializes cybersecurity services, works with some of the world's leading companies to provide service solutions and engineering services. Leveraging the latest IT technologies (cloud, OSS, machine learning, and big data analytics), TOYO strives to deliver new services and value in real time.

Security & Lab



Products

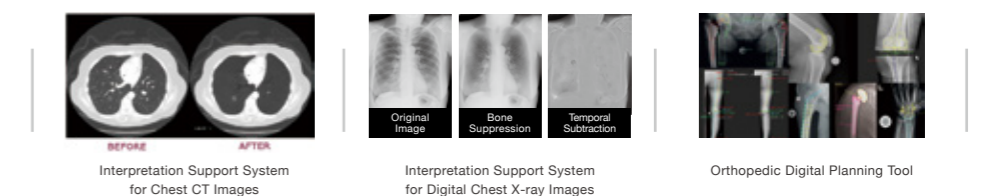
- DDoS Mitigation | ■ Deep Packet Inspection/Smart Traffic Management | ■ Network Visibility/Service Assurance | ■ Network Detection & Response/Active Cyber Defense
- Dark Web Monitoring/Cyber Threat Intelligence | ■ Continuous Threat Exposure Management/External Attack Surface Management | ■ Supply Chain Risk Scoring
- Public Cloud Security | ■ Contents Delivery Network/Open Caching | ■ Log Analysis



Life Science

Develop cutting-edge solutions in the life sciences field

We provide advanced medical imaging such as interpretation support systems for chest X-ray and CT images, as well as 2D and 3D preoperative digital planning tools in orthopedic surgery, to improve people's health by supporting doctors.



Products

- Interpretation Support Systems for Chest CT Images | ■ Interpretation Support Systems for Digital Chest X-ray Images | ■ Orthopedic Digital Planning Tools
- X-ray Dose Management Systems | ■ Medical Image Enhancement Software | ■ X-ray Image Acquisition, Processing and Display Board
- Medical Image Display Systems | ■ Sterilizer for Infectious Waste

Certification and Accreditation

Construction

Special Construction Business Licensed by the Governor of Tokyo (S-5)No. 156164
Machinery and Equipment Installation Business
Ordinary Construction Business Licensed by the Governor of Tokyo (O-4)No. 156164
Electrical Construction Business

Electrical Construction Business

Registered Electrical Construction Business Notified by the Governor of Tokyo No. 2211712

Second-Class Medical Device Manufacturing and Sales Business

Medical Device Manufacturing Business

Specially-Controlled Medical Devices Sales Business

ISO 9001

Certification : ISO 9001:2015
Certification organization : General Incorporated Foundation, Japan Quality Assurance Organization (JQA)
Certificate number : JQA-QM8795

ISO/IEC 17025

Accreditation organization : The American Association for Laboratory Accreditation (A2LA)
Certificate number : A2LA 2296.01
Scope of calibration : high frequency measurement instruments, DC voltages, AC voltages, resistance, and frequencies

ISO 14001

Certification : ISO 14001:2015
Certification organization : General Incorporated Foundation, Japan Quality Assurance Organization (JQA)
Certificate number : JQA-EM4908

ISO/IEC 27001

Certification : ISO/IEC 27001:2022 / JIS Q 27001:2023
Certification organization : General Incorporated Foundation, Japan Quality Assurance Organization (JQA)
Organization : TOYO Corporation Security & Lab Company
Certificate number : JQA-IM1536
Scope of Registration : SALES, DELIVERY, INSTALLATION, INSPECTION, REPAIR AND CUSTOMER SUPPORT FOR BOTH SECURITY SOFTWARE AND TELECOMMUNICATIONS EQUIPMENT, AND SECURITY SERVICES.

Corporate Data

Registered Name	TOYO Corporation
Head Office	1-6, Yaesu 1-chome, Chuo-ku, Tokyo 103-8284, Japan
Date of Establishment	September 4, 1953
Capital	Paid-in: ¥4,158 million
Number of Employees	650(consolidated) 522(non-consolidated) *As of September 30, 2024
Stock Exchange Listings	Tokyo Stock Exchange Prime Market (Code: 8151)
Website	https://www.toyo.co.jp/english/

Executives

President & CEO	Toshiya Kohno
Director, Executive VP	Mitsuru Onodera
Director, Senior VP	Yoshimichi Imaizumi
Director, Senior VP, CTO	Takeo Kiuchi
Director, Senior VP	Toshiaki Matsui
Outside Director	Katsuya Nishi
Outside Director	Miyuki Suka
Outside Director	Tomoki Yoda
Auditor	Makoto Shibuya
Auditor	Kiyo Morikawa
Auditor	Shigehisa Horinokita
Auditor	Kumiko Fujiwara
Executive Officer	Masahiko Kawauchi
Executive Officer	Toshiro Sakurai
Executive Officer	Sadaharu Nishimura

Domestic Offices

- **Head Office**
1-6, Yaesu 1-chome, Chuo-ku, Tokyo 103-8284, Japan
- **R&D Center**
1-1, Kiba 1-chome, Koto-ku, Tokyo 135-0042, Japan
- **Technical & Logistics Center**
11-1, Wakamiya, Morinosato, Atsugi, Kanagawa 243-0124, Japan
- **Keio-TOYO Nano Imaging Center Office for Industry-Academia Collaboration between TOYO Corporation and Keio University Central Service Facilities for Research**
Keio University, Yagami Campus
14-1, Hiyoshi 3-chome, Kohoku-ku, Yokohama, Kanagawa 223-8522, Japan
- **Osaka Branch**
Shin-Osaka Brick Building, 6-1, Miyahara 1-chome, Yodogawa-ku, Osaka, Osaka 532-0003, Japan
- **Nagoya Branch**
Nagoya Hirokoji Building, 3-1, Sakae 2-chome, Naka-ku, Nagoya, Aichi 460-0008, Japan
- **Utsunomiya Sales Office**
Utsunomiya Otsuka Building, 4-3, Higashi Shukugo 2-chome, Utsunomiya, Tochigi 321-0953, Japan

Overseas Subsidiaries

- **TOYO Corporation China**
[Shanghai]
Room 901, Enterprise Square, No.228 Meiyuan Rd, Jing'an District, Shanghai 200070, China
[Beijing]
Room 102, Building C, Yeqing Plaza, No.9 Wangjing North Rd, Chaoyang District, Beijing 100102, China
[Guangzhou]
Room B01, 19/F, Zhongzhou Trading Center, No. 1088, Xingang East Road, Haizhu District, Guangzhou 510330, China
- **TOYO Corporation International Ltd.**
- **TOYOTech LLC**
47623 Lakeview Blvd, Fremont, CA 94538, USA
- **Beijing Puli Technology Co., Ltd.**
Room 102, Building C, Yeqing Plaza, No.9 Wangjing North Rd, Chaoyang District, Beijing 100102, China
- **Rototest International AB**
Salemsvägen 20,144 40 Rönninge, Sweden
- **AeroGT Labs Corporation**
47623 Lakeview Blvd, Fremont, CA 94538, USA

Domestic Subsidiaries

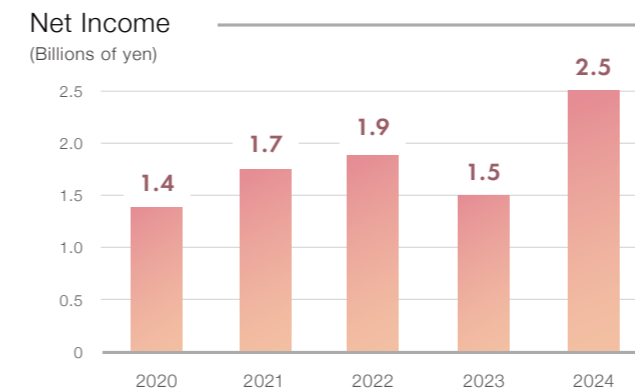
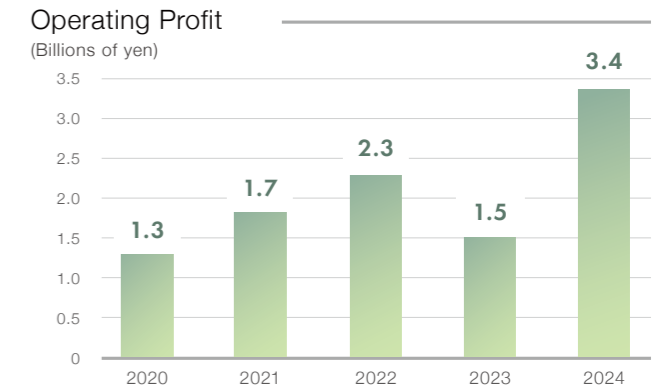
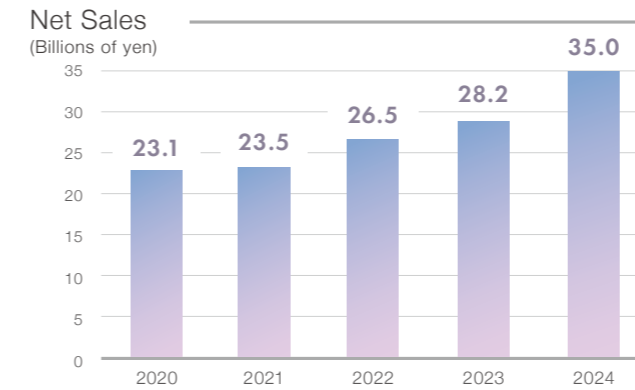
- **LEXI Co., Ltd.**
1-6, Yaesu 1-chome, Chuo-ku, Tokyo, 103-8284, Japan
- **TOYO EMC Engineering**
1-6, Yaesu 1-chome, Chuo-ku, Tokyo, 103-8284, Japan
- **L.Tail Co., Ltd.**
108-4, Kamo 6-chome, Kawanishi, Hyogo, 666-0025, Japan

Overseas Affiliate

- **Uila, Inc.**
2975 Scott Blvd, Suite #110, Santa Clara, CA 95054, USA

Financial Highlights

TOYO Corporation and Consolidated Subsidiaries
Years Ended September 30



History

- 1953**
Established as Kowa Trading Co., Ltd., engaged mainly in import and sales of industrial machinery
- 1955**
Changed the company name to TOYO Trading Co., Ltd.
- 1977**
Changed the company name to TOYO Corporation
- 1985**
Set up Technical Center
Listed on the Second Section of the Tokyo Stock Exchange
- 1990**
Listed on the First Section of the Tokyo Stock Exchange
- 2002**
Technical Center obtained ISO 9001 certification
- 2005**
Obtained ISO/IEC 17025 and ISO 14001 certifications
- 2007**
Set up Calibration Laboratory in Technical Center
- 2010**
Established TOYO Corporation China in Shanghai
- 2014**
Set up a branch of TOYO Corporation China in Beijing
- 2015**
Established TOYOTech LLC in California, USA
- 2017**
Set up Technical Research Laboratory
Established One Technologies Company as an in-house company
- 2018**
Security & Lab Company obtained ISO/IEC 27001 certification
- 2022**
Listed on the Prime Market of the Tokyo Stock Exchange
- 2023**
70th Anniversary
Set up R&D Center